

Insert Your Title Here

Insert Subtitle Here

FirstName Surname[†]
 Department Name
 Institution/University Name
 City State Country
 email@email.com

FirstName Surname
 Department Name
 Institution/University Name
 City State Country
 email@email.com

FirstName Surname
 Department Name
 Institution/University Name
 City State Country
 email@email.com

ABSTRACT

This Word Template is based on the ACM Interim Proceedings Template (see <https://www.acm.org/publications/proceedings-template>). AM20 does not yet use the "New Workflow for ACM Publications". In this sample-structured document, neither the cross-linking of float elements and bibliography nor metadata/copyright information is available.

The length of the abstract should be between 150 and 200 words.

CCS CONCEPTS

• Insert CCS text here • Insert CCS text here • Insert CCS text here

KEYWORDS

Insert keyword text, Insert keyword text, Insert keyword text,
Insert keyword text

ACM Reference format:

FirstName Surname, FirstName Surname and FirstName Surname. 2020.
Insert Your Title Here: Insert Subtitle Here. In *Proceedings of Audio
Mostly (AM'20)*. ACM, New York, NY, USA, 2 pages.
<https://doi.org/10.1145/0000000.0000000>

1 Instructions

Make sure that you fill in the following content:

- title (delete subtitle if not needed)
- CCS concepts (see <https://dl.acm.org/ccs>)
- keywords (see list of popular keywords of Audio Mostly: <https://audiomostly.com/2020/call/cfc/>)
- References with proper formatting and numbering (see <https://www.acm.org/publications/authors/reference-formatting>)

[†]Author Footnote to be captured as Author Note

Permission to make digital or hard copies of part or all of this work for personal or classroom use is granted without fee provided that copies are not made or distributed for profit or commercial advantage and that copies bear this notice and the full citation on the first page. Copyrights for third-party components of this work must be honored. For all other uses, contact the owner/author(s).

AM'20, September 15–17, 2020, Graz, Austria

© 2020 Copyright held by the owner/author(s). 978-1-4503-0000-0/18/06...\$15.00
<https://doi.org/10.1145/0000000.0000000>

For submission, create a PDF of the manuscript using the “*Save as PDF*” option.

For the bibstrip/copyright information, including DOI, ISBN, etc., authors of accepted manuscripts will receive further instructions prior to camera ready submission.

2 Insert Heading Level 1

The updated template, user manuals, samples, and required fonts, all are available at the URL <https://www.acm.org/publications/proceedings-template>. It contains said information for all three versions of MS Word (Windows and 2 versions of Mac). There are also separate links to the user guide, which can be referred to by the user. This URL also contains some useful video links, which describe how to add the template, structure the paper, and generate the layout, in different clips. **Display Formula with Number**

$$f(x) = a_0 + \sum_{n=1}^{\infty} \left(a_n \cos \frac{n\pi x}{L} + b_n \sin \frac{n\pi x}{L} \right) \quad (1)$$

Continuation part of Paragraph Text The user must style this paragraph in **ParaContinue** style, which follows immediately after the **DisplayFormula** (numbered equation). The **DisplayFormula** style is applied only in case of a numbered equation. A numbered equation always has a number to its right. Insert paragraph text here. **Display Formula without Number**

$$(x + a)^n = \sum_{k=0}^n \binom{n}{k} x^k a^{n-k}$$

The **DisplayFormulaUnnum** style is applied only in case of an unnumbered equation. An unnumbered display equation never contains an equation number to its right, and this unique property distinguishes it from a numbered equation.

Insert paragraph text here. Insert paragraph text here. Insert
paragraph text here. Insert paragraph text here. Insert paragraph
text here. Insert paragraph text here. Insert paragraph text here.
Insert paragraph text here. Insert paragraph text here.

Insert paragraph text here. Insert paragraph text here. Insert
paragraph text here. Insert paragraph text here. Insert paragraph
text here. Insert paragraph text here. Insert paragraph text here.
Insert paragraph text here. Insert paragraph text here. Insert
paragraph text here. Insert paragraph text here. Insert paragraph
text here. Insert paragraph text here. Insert paragraph
text here.

Insert paragraph text here. Insert paragraph text here. Insert
paragraph text here. Insert paragraph text here. Insert paragraph
text here. Insert paragraph text here. Insert paragraph text here.
Insert paragraph text here. Insert paragraph text here. Insert
paragraph text here. Insert paragraph text here. Insert paragraph
text here.

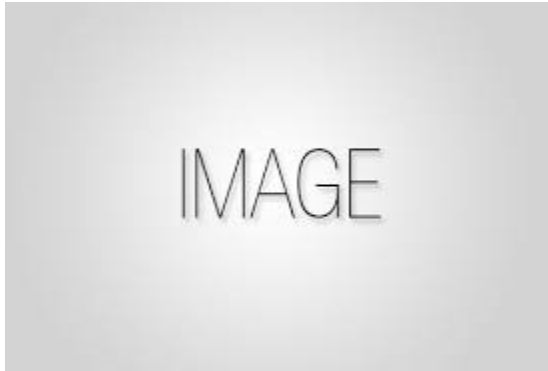


Figure 1: Figure Caption and Image above the caption [In draft mode, Image will not appear on the screen]

Theorem/Proof/Lemma. Insert text here for the enunciation or Math statement. Insert text here for the enunciation or Math statement. Insert text here for the enunciation or Math statement. Insert text here for the enunciation or Math statement.

...Insert text here for the Quotation or Extract, Insert
text here for the Quotation or Extract, Insert text here
for the Quotation or Extract, Insert text here for the
Quotation or Extract, Insert text here for the Quotation
or Extract, Insert text here for the Quotation or Extract.

2.1 Heading Level 2

In the below paragraph, it is explained how alt-txt value is placed in **MS Word 2010**. To add alternative text to a picture in Word 2010, follow these steps:

1. In a Word 2010 document, insert a picture.
2. Right click on the inserted picture and select the **Format Picture** option.
3. Select the **Alt Text** option from the left-side panel options.
4. In the "Title:" and "Description:" text boxes, type the text you want to represent the picture, and then click "Close".

Below are steps to place alt-txt value in **MS Word 2013/2016**. To add alternative text to a picture in Word 2013/2016, follow these steps:

1. In a Word 2013/2016 document, insert a picture.
2. Right click on the inserted picture and select the **Format Picture** option.
3. In the settings at the right side of the window, click on the "Layout & Properties" icon (3rd option).
4. Expand **Alt Text** option.
5. In the "Title:" and "Description:" text boxes, type the text you want to represent the picture, and then click "Close".

[illegible][illegible]

Insert paragraph text here. Insert paragraph text here. Insert
paragraph text here. Insert paragraph text here. Insert paragraph
text here. Insert paragraph text here. Insert paragraph text here.
Insert paragraph text here. Insert paragraph text here. Insert
paragraph text here. Insert paragraph text here. Insert paragraph
text here. Insert paragraph text here. Insert paragraph text here.
Insert paragraph text here. Insert paragraph text here. Insert
paragraph text here. Insert paragraph text here. Insert paragraph
text here. Insert paragraph text here. Insert paragraph text here.
Insert paragraph text here.

Insert paragraph text here. Insert paragraph text here. Insert
paragraph text here. Insert paragraph text here. Insert paragraph
text here. Insert paragraph text here. Insert paragraph text here.
Insert paragraph text here. Insert paragraph text here. Insert
paragraph text here. Insert paragraph text here.

ACKNOWLEDGMENTS

[illegible]

REFERENCES

- [1] Patricia S. Abrial and Robert Plant, 2007. The patent holder's dilemma: Buy, sell, or troll? *Commun. ACM* 50, 1 (Jan., 2007), 36-44. DOI: <https://doi.org/10.1145/1188913.1188915>.
- [2] Sten Andler. 1979. Predicate path expressions. In *Proceedings of the 6th. ACM SIGACT-SIGPLAN Symposium on Principles of Programming Languages (POPL '79)*. ACM Press, New York, NY, 226-236. DOI:<https://doi.org/10.1145/567752.567774>.
- [3] Ian Editor (Ed.). 2007. *The title of book one* (1st. ed.). The name of the series one, Vol. 9. University of Chicago Press, Chicago. DOI:<https://doi.org/10.1007/3-540-09237-4>.
- [4] David Kosiur. 2001. *Understanding Policy-Based Networking* (2nd. ed.). Wiley, New York, NY..